

Software Setup

2

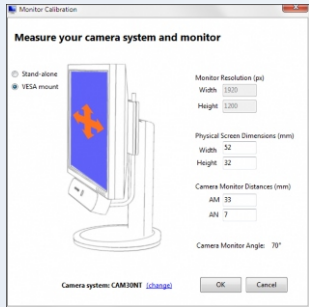
Prerequisites

1. Installation CD, memory stick or latest download from website.
2. An IntelliGaze camera unit with appropriate license.
3. A PC with a preferably fresh Windows installation which meets the hardware requirements.

- Have latest Windows patches installed.
- An Internet connection is not required for most installers.
- IntelliGaze provides a common installer for both 32bit and 64bit systems.
- To prevent a re-boot, the camera should be disconnected during setup.
- Updates can be installed over a previous version.

Software Installation

1. Launch setup.exe and follow the instructions until the process finishes successfully.
2. On a first-time installation, please run the Monitor Calibration program:



In order to ensure the highest gaze accuracy over a large working range, the physical setup of the system needs to be calibrated once, when the system is being integrated.

Most cameras will be attached to the monitor using a 'VESA mount'. The interactive sketch will assist you in locating the requested measurements.

For later updates, the Monitor Calibration program can be found in the IntelliGaze program group.

- In a dual-monitor setup, please make sure the camera is attached to the primary display!

3. Plug in the camera and wait until a Windows message confirms the installation of 'alea technologies drivers'. The device manager now lists the camera driver in the USB section, additionally the Internal Camera Status LED (🟡) turns yellow.

4. Start IntelliGaze, and position yourself centered about 60cm (2ft.) from the camera.

Open the Operation Center and verify the proper functioning by checking the Tracking Status Monitor: stable green 'smiley' and no error messages. The 'smiley' should follow your head movements without significant delay or stutter.

- The Tracking Status Monitor reacts on touch and will provide more details or options in case of problems.

5. The basic IntelliGaze system has now been installed.

Setting System Preferences for Desktop Control

Start IntelliGaze and open the preferences dialog (i.e. Ctrl-F11 or via OC).

- General - Select your language and ensure that the camera license matches your requirements.
- Integrated Keyboard - Select your preferred keyboard layout(s).
- Input - adapt the preferred input option(s), i.e. dwell or blink click or/and switches. This will be the 'triggers' which can be used in application profiles.

- If Windows should provide gaze input directly after boot-up, you will have to add IntelliGaze to the Startup folder.

Configuring the Service Mode (optional)

Close IntelliGaze and start the IntelliGaze Service program to adjust the parameters if needed:

- Win7: Enable and set up touch screen input. (Automatic in Win8 and Win10).
- Optional: Disable automatic search for software updates.

Safety & Compliance

The IntelliGaze™ IG30NT systems has been certified for general office use as in the class of information and telecommunication devices. The system will meet or exceed the required standard according to CE and FCC regulations.

Safety of the Infrared Illumination

The camera system contains LED sources that emit light in the near infrared (NIR) spectrum. The light emission levels have been measured and calculated to comply with the European laser safety standard EN60825-1. The standards contain test procedures to verify that the emitted light will cause no thermal injury to the eye of a person being exposed to the light. The product is classified as a Class 1 LED product and complies with the standards for long-time exposure. Exposure varies with the chosen frame-rate and working distance. For comparison reason: the user will be exposed to about 200mW/cm² at 40Hz tracking rate in the suggested operating distance of 60cm / 2ft..

Magnetic Field Hazard

The CAM30NT unit contains small magnets. Magnetic fields may interfere with the function of cardiac pacemakers and implantable defibrillators. As a general rule, please maintain a minimum distance of 10cm / 4 in. between the frontal part of the device and any implanted, electronic device.

Epilepsia / Photosensitive Seizure Warning

A very small percentage of people may experience a seizure when exposed to certain visual images, including flashing lights or patterns that may appear in video games. Even people who have no history of seizures or epilepsy may have an undiagnosed condition that can cause these photosensitive epileptic seizures while using a gaze interaction device on a computer screen. These seizures may have a variety of symptoms, including lightheadedness, altered vision, eye or face twitching, jerking or shaking of arms or legs, disorientation, confusion, or momentary loss of awareness. Seizures may also cause loss of consciousness or convulsions that can lead to injury from falling down or striking nearby objects. Immediately stop while using a gaze interaction device on a computer screen and consult a doctor if you experience any of these symptoms. Parents should watch for or ask their children about the above symptoms - children and teenagers are more likely than adults to experience these seizures. The risk of photosensitive epileptic seizures may be reduced by taking the following precautions:

- Using a gaze interaction device on a computer screen only in a well-lit room.
- Do not use a gaze interaction device on a computer screen if you are drowsy or fatigued.
- If you or any of your relatives have a history of seizures or epilepsy, consult a doctor before playing.

Mounting Warning

The camera should be mounted according to manufacturer or authorized system integrator instructions. alea technologies is not liable for damage or injuries due to a dropped or tipping over device. The mounting of an alea technologies product is done entirely at the user's own risk.

Emergency Situations

Be aware that due to the possible risk of failure, the IntelliGaze system should not be relied upon exclusively as an audio communications or an environmental control device. In emergencies, as well as in dangerous, or other wise sensitive situations, do not solely rely on the device for communication.

Do Not Open the Camera Device

There are no user serviceable parts inside. Non-compliance will result in loss of Warranty!

Hot Key	Function
Ctrl-A	Show Application Center (Safe Mode only)
Ctrl-F5	Start calibration
Ctrl-F1 / ⬆	Show Operation Center
Ctrl-F11	Enter preferences menu - Equiv. tray icon.
Space	Accept calibration point manually
PAUSE	Toggle mouse cursor control on/off
Ctrl-D	Screen video recording, with gaze on/off
Ctrl-F12	Toggle Demo Mode on/off
Ctrl- ⬅/➡	Show side menus
Ctrl- ⬇	Show integrated keyboard
Ctrl-Q	Quit IntelliGaze

alea technologies gmbh
Potsdamer Str. 18a
14513 Teltow - Germany
Fon.: +49 3328 3380 290
Fax: +49 3328 3380 299
email: info@alea-technologies.de
Web: www.alea-technologies.de

IntelliGaze™ V4.1

IG30NT Gaze Communication System

Quick Start Guide

Hardware Setup

1

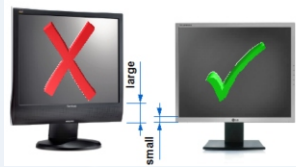
Prerequisites

PC connection

A free USB 2 or 3 port, preferably directly on the computer.

Monitor Size

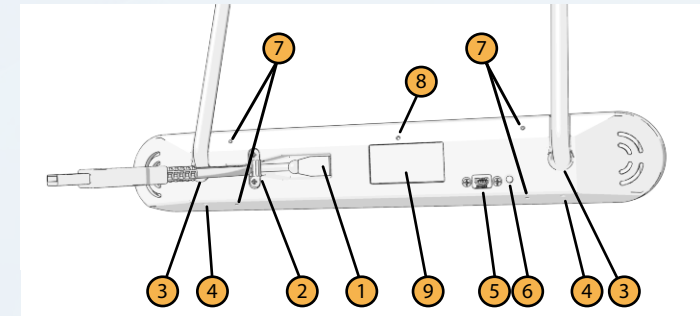
IntelliGaze can track most users accurately on monitors up to 22". The camera should be mounted as closely as possible to the screen area to achieve best results. A VESA mount is desirable.



Monitor Arm / Desktop Stand

It is highly recommended to use a monitor arm or adaptable desktop stand to provide flexibility when positioning the system.

Camera Hardware - CAM30NT



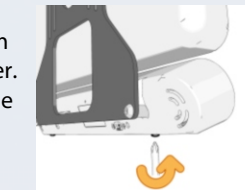
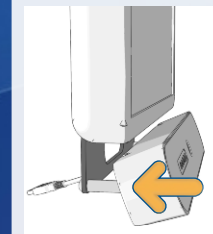
1 Mini-USB2 connector	6 Status LED - Green: OK.
2 Cable lock	7 Aux. Mounting threads: M3, max. 8mm Depth.
3 8mm pin-mount	8 Internal Camera Status LED Yellow: OK
4 Pin-lock screw.	9 Device label.
5 Auxiliary power supply. Use only certified adapters!	

Mounting the Camera

1. Please attach the included mounting adapter to the computer and possibly monitor arm. The actual combination will vary and depend on your mounting and computing hardware.



2. Push the camera module carefully onto the rods until the front is approximately aligned with the monitor plane.
3. Carefully tighten the lock screw on the bottom with a Philips screw driver.
4. Connect the USB cable to an available USB2/3 port on the computer.



USB Cable Options

The camera is available with either 0,5 or 1m USB2 cable. Above 1m cable length the system might report a 'cable too long' error due to electrical limitations. A small, external power supply to supplement the USB port is available as an option.

Maintenance

The camera contains no serviceable parts. Please clean the acrylic front plate with a soft cloth, i.e. micro-fibre and avoid harsh cleaners. The IR-glass mirror should be cleaned using isopropyl alcohol and a cotton swab.

